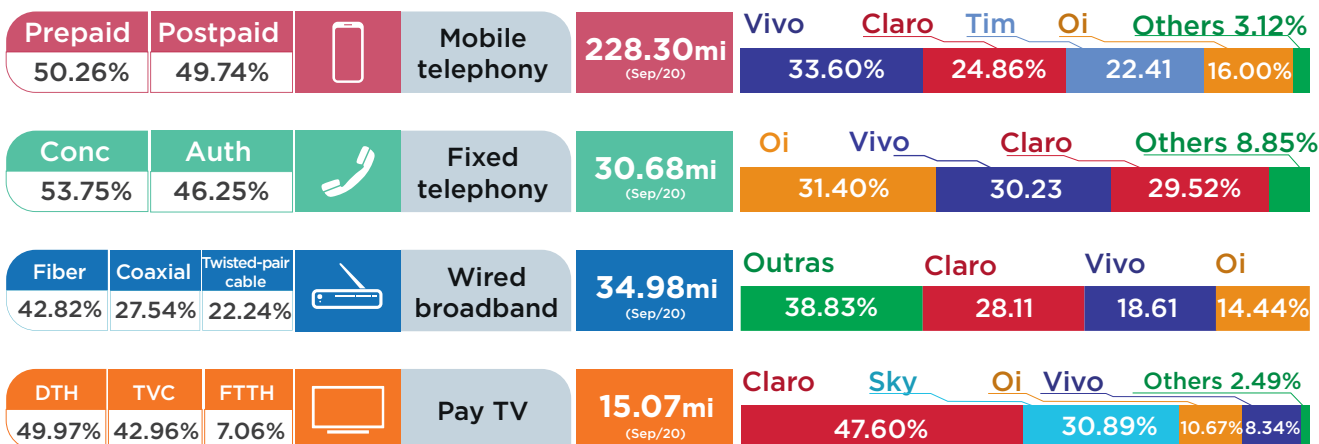


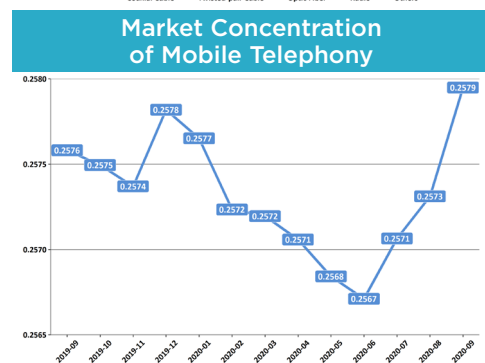
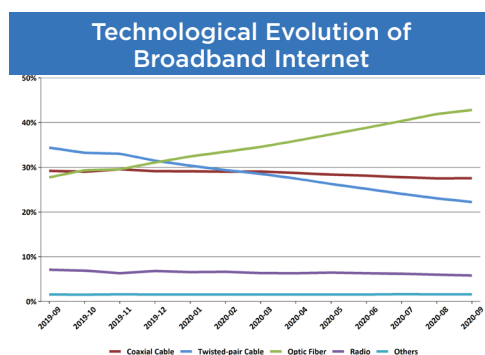
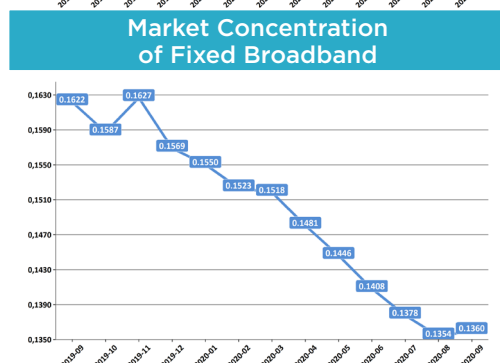
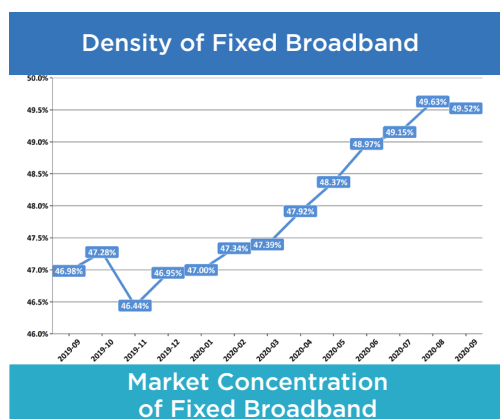
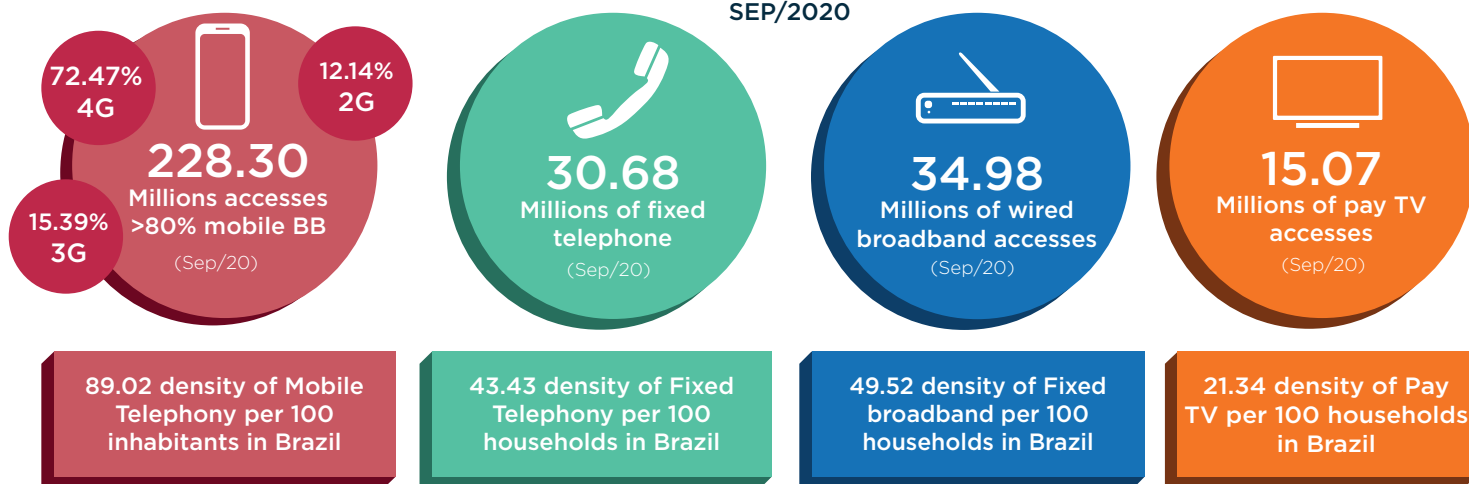


OVERVIEW OF TELECOMMUNICATION IN BRAZIL SEPTEMBER/2020



309.03 Millions

contract of telecom services in
SEP/2020



* Market Concentration is calculated using [Herfindahl-Hirschman Index \(HHI\)](#).

Mobile telephony

MOBILE TELEPHONY, PER GROUP AND TECHNOLOGY

Group	Accesses	4G	3G	2G	Market Share
VIVO	76,718,079	53,510,141	9,651,673	13,556,265	33.60%
CLARO	56,751,766	39,701,112	15,265,185	1,785,469	24.86%
TIM	51,158,832	40,196,616	6,060,937	4,901,279	22.41%
OI	36,536,573	26,405,967	3,381,159	6,749,447	16.00%
OTHER	7,134,170	5,628,155	781,023	724,992	3.12%
TOTAL	228,299,420	165,441,991	35,139,977	27,717,452	100.00%
PERCENTAGE	100.00%	72.47%	15.39%	12.14%	

Fixed telephony

ON SERVICE ACCESSES, FIXED TELEPHONY

Group	Accesses	Market Share
OI	9,631,465	31.40%
VIVO	9,273,613	30.23%
CLARO	9,057,041	29.52%
OTHER	2,715,611	8.85%
TOTAL	30,677,730	100.00%

ACCESSES PER TYPE OF GRANTS, FIXED TELEPHONY

Type	Accesses	Percentage
As a public service concession	16,535,309	53.90%
As a private service	14,142,421	46.10%
TOTAL	30,677,730	100.00%

Wired broadband

WIRED BROADBAND, PER GROUP AND TECHNOLOGY

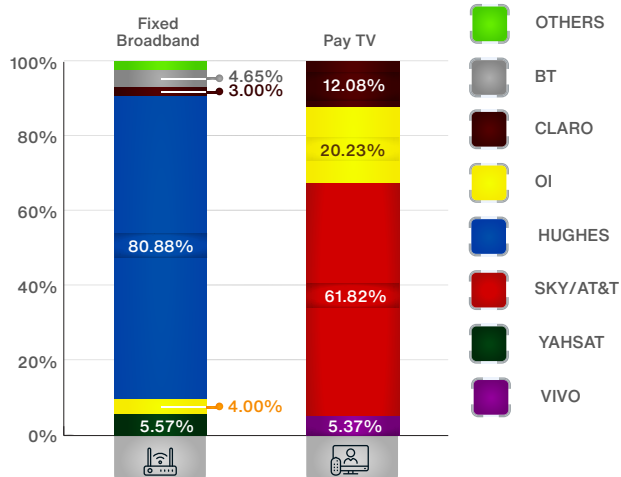
Group	Accesses	Twisted-pair cable	Coaxial cable	Optic Fiber	Radio	LTE	Satellite	Market Share
CLARO	9,834,026	77,076	9,304,737	427,604	14,549	0	10,060	28.11%
VIVO	6,511,126	3,267,614	0	3,243,512	0	0	0	18.61%
OI	5,051,153	2,955,975	0	2,065,821	15,948	0	13,409	14.44%
OTHER	13,584,268	1,478,508	327,334	9,242,408	2,004,637	219,528	311,853	38.83%
TOTAL	34,980,573	7,779,173	9,632,071	14,979,345	2,035,134	219,528	335,322	100.00%
PERCENTAGE	100.00%	22.24%	27.54%	42.82%	5.82%	0.63%	0.96%	

Pay TV

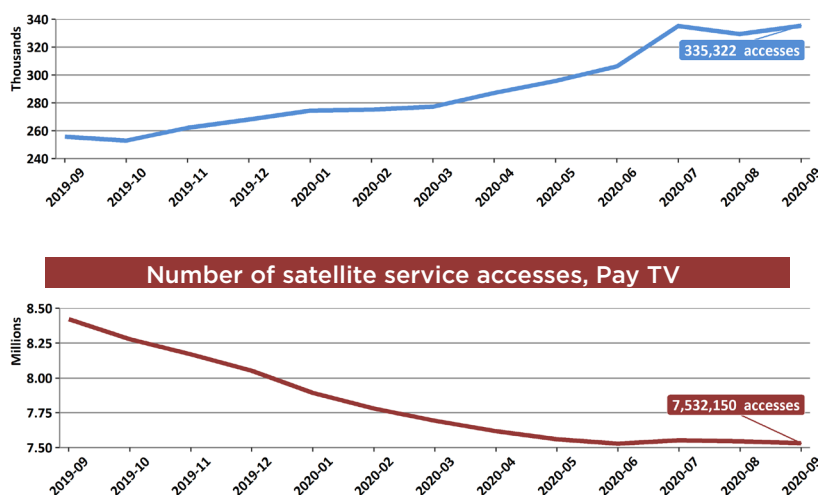
PAY TV, PER GROUP AND TECHNOLOGY

Group	Accesses	DTH	FTTH	MMDS	TVA	TVC	Market Share
CLARO	7,173,763	909,523	0	0	0	6,264,240	47.60%
SKY/AT&T	4,656,393	4,656,393	0	0	0	0	30.89%
OI	1,608,743	1,523,971	84,772	0	0	0	10.67%
VIVO	1,257,776	404,608	853,168	0	0	0	8.34%
OTHER	375,721	37,655	126,542	216	64	211,244	2.49%
TOTAL	15,072,396	7,532,150	1,064,482	216	64	6,475,484	100.00%
PERCENTAGE	100.00%	49.97%	7.06%	0.00%	0.00%	42.96%	

MARKET SHARE - SATELLITE



Number of satellite service accesses, Broadband Internet



Number of satellite service accesses, Pay TV

