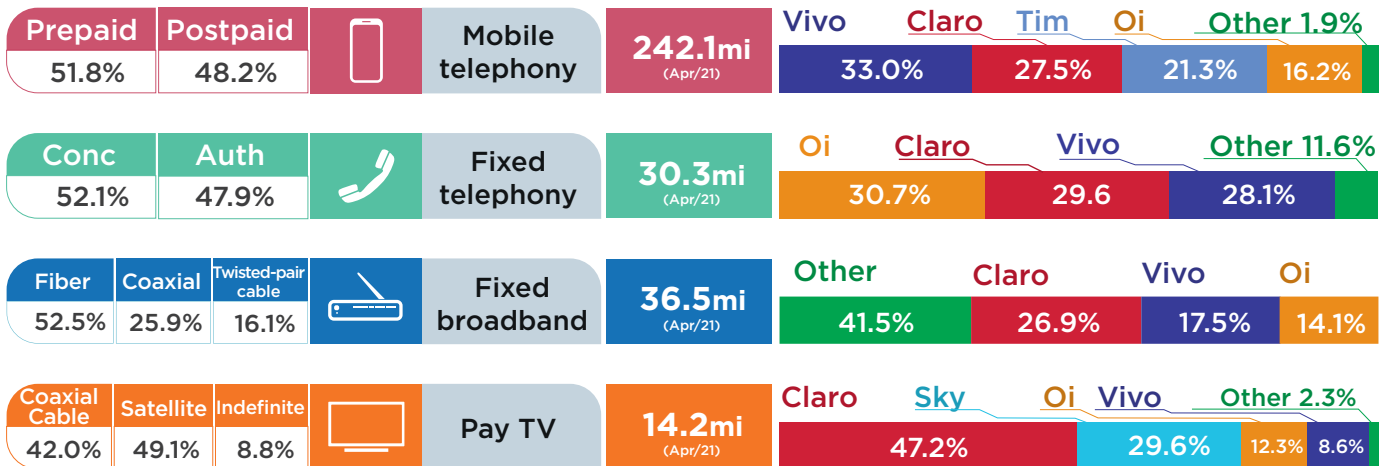


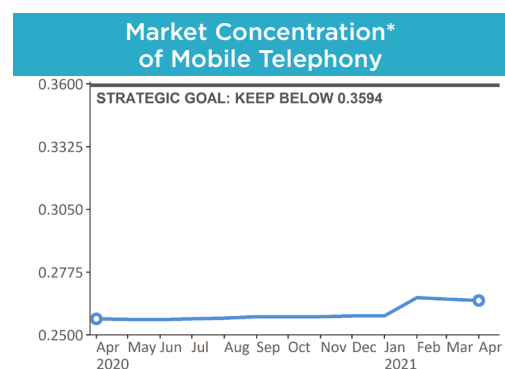
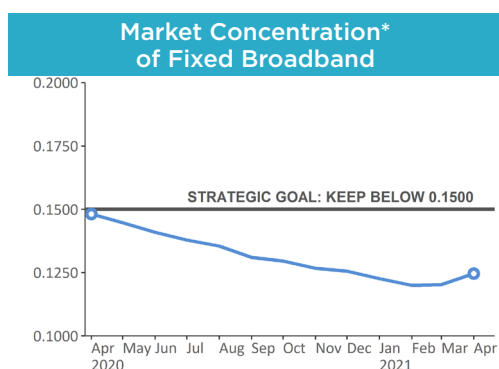
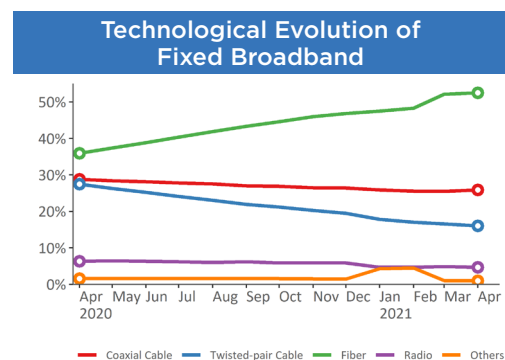
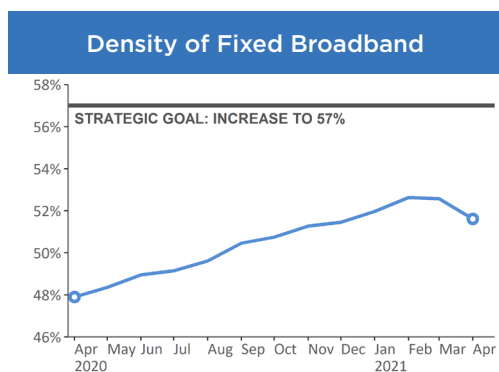
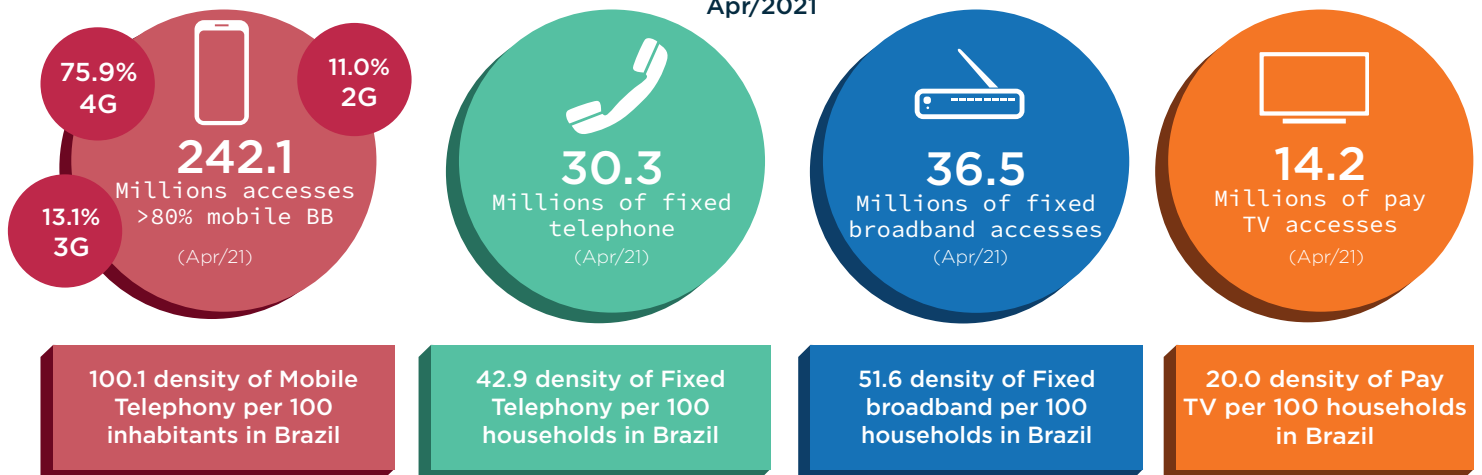


# OVERVIEW OF TELECOMMUNICATIONS IN BRAZIL

APR/2021



**323,0 Millions**  
contract of telecom services in  
Apr/2021



\* Market Concentration is calculated using [Herfindahl-Hirschman Index \(HHI\)](#).

MOBILE TELEPHONY, PER GROUP AND TECHNOLOGY						
Mobile telephony	Group	Accesses	4G	3G	2G	Market Share
	VIVO	79,886,743	58,221,107	8,888,367	12,777,269	33.0%
	CLARO	66,684,225	48,906,376	15,252,130	2,525,719	27.5%
	TIM	51,501,888	44,047,438	4,077,210	3,377,240	21.3%
	OI	39,318,970	28,994,687	3,238,214	7,086,069	16.2%
	Other	4,717,040	3,575,102	262,427	879,511	1.9%
	TOTAL	242,108,866	183,744,710	31,718,348	26,645,808	100%
	PERCENTAGE	100%	75.9%	13.1%	11.0%	

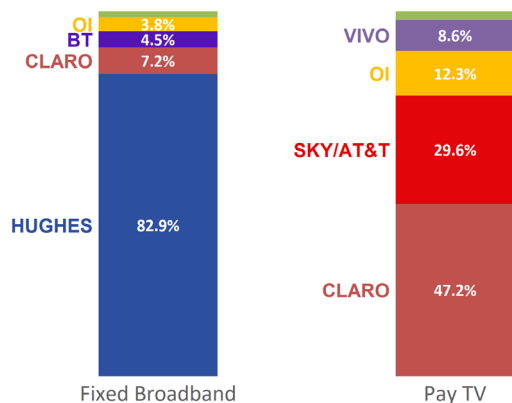
Fixed telephony	ON SERVICE ACCESSES, FIXED TELEPHONY		
	Group	Accesses	Market Share
	OI	9,307,456	30.7%
	CLARO	8,953,332	29.6%
	VIVO	8,521,298	28.1%
	Other	3,510,502	11.6%
	<b>TOTAL</b>	<b>30,292,588</b>	<b>100%</b>

ACCESSSES PER TYPE OF GRANTS, FIXED TELEPHONY		
Type	Accesses	Percentual
As a public service concession	15,768,083	52.1%
As a private service	14,524,505	47.9%
<b>TOTAL</b>	<b>30,292,588</b>	<b>100%</b>

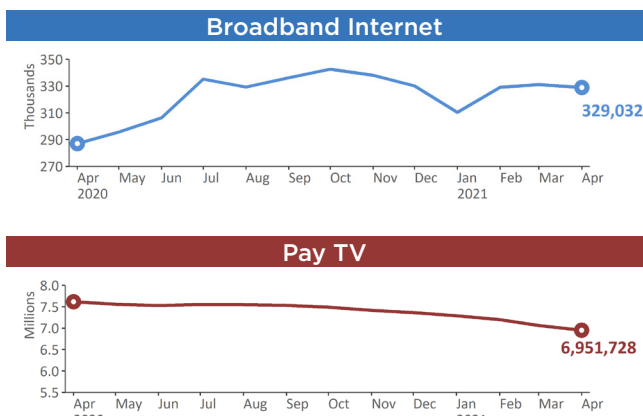
Fixed broadband	FIXED BROADBAND, PER GROUP AND TECHNOLOGY								
	Group	Accesses	Optic Fiber	Coaxial Cable	Twisted-pair cable	Radio	Indefinite	Satellite	Market Share
	CLARO	9,806,504	472,734	9,230,064	73,953	5,962	0	23,791	26.9%
	VIVO	6,364,655	3,894,230	59	2,470,366	0	0	0	17.5%
	OI	5,158,159	2,904,494	123	2,228,232	12,659	0	12,651	14.1%
	Other	15,128,684	11,866,578	194,211	1,081,288	1,680,890	13,127	292,590	41.5%
	TOTAL	36,458,002	19,138,036	9,424,457	5,853,839	1,699,511	13,127	329,032	100%
	PERCENTAGE	100%	52.5%	25.9%	16.1%	4.7%	0.0%	0.9%	

PAY TV, PER GROUP AND TECHNOLOGY							
Pay TV	Group	Accesses	Coaxial Cable	Satellite	Indefinite	Optic Fiber	Market Share
	CLARO	6,685,477	5,828,154	779,643	0	77,680	47.2%
	SKY/AT&T	4,194,958	0	4,194,958	0	0	29.6%
	OI	1,736,954	0	1,639,800	0	97,154	12.3%
	VIVO	1,211,428	0	295,785	0	915,643	8.6%
	Other	321,954	119,182	41,542	0	158,471	2.3%
	TOTAL	14,150,771	5,947,336	6,951,728	0	1,248,948	100%
	PERCENTAGE	100%	42.0%	49.1%	0.0%	8.8%	

Market Share - Satellite



Number of satellite service accesses



In January 2021, there was a change in access data collection, according to [Resolution No. 712/2019](#), and some databases are still undergoing adjustments.