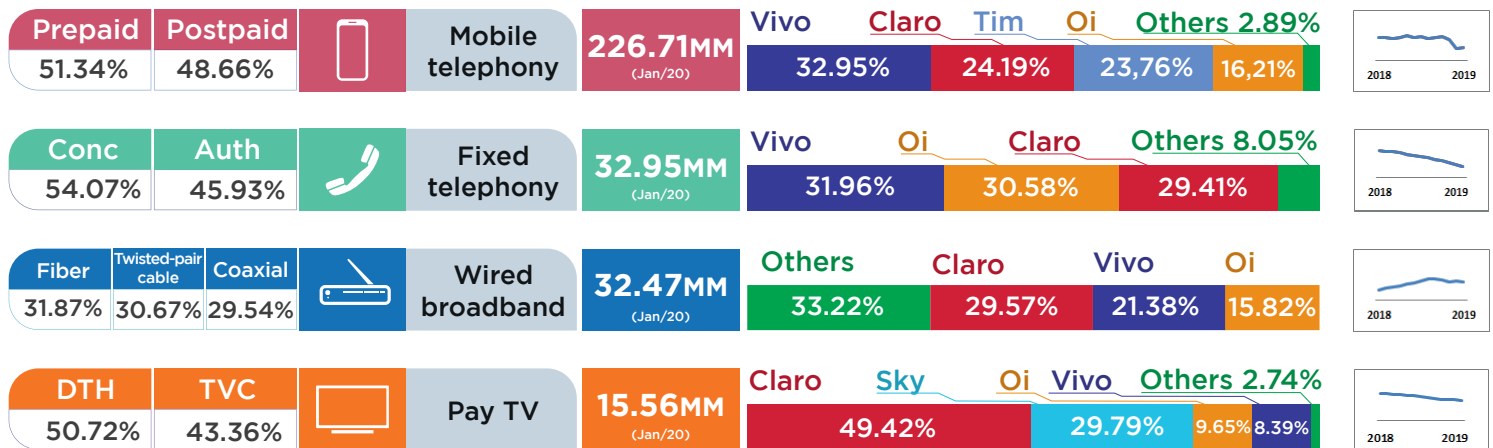
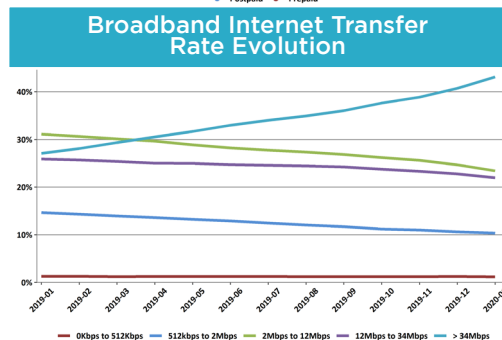
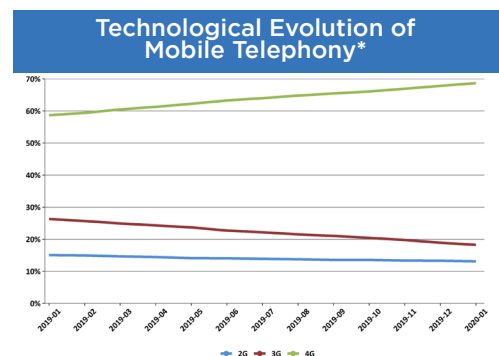
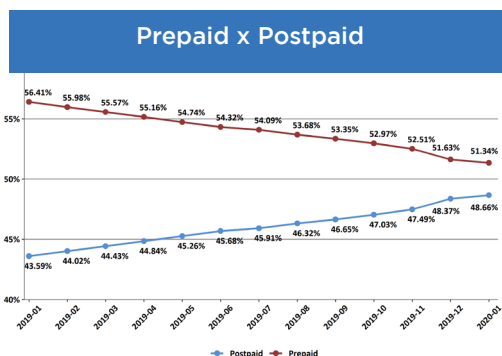
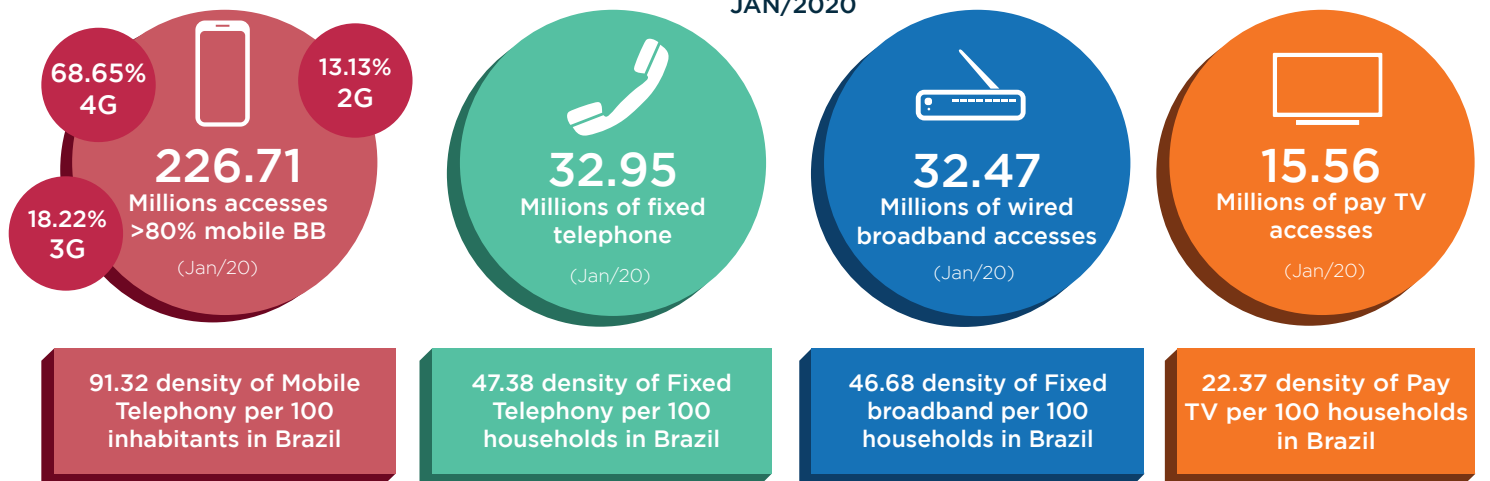


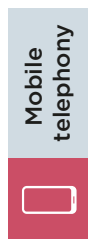


OVERVIEW OF TELECOMMUNICATION IN BRAZIL JANUARY/2020



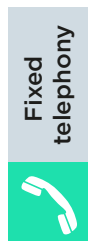
307.69 Million
contracts of telecommunication services in
JAN/2020





MOBILE TELEPHONY, PER GROUP AND TECHNOLOGY

Group	Accesses	4G	3G	2G	Market Share	Complaints Index
VIVO	74,703,322	49,364,336	11,345,163	13,993,823	32.95%	0.36
CLARO	54,847,691	36,821,789	16,611,646	1,414,256	24.19%	0.57
TIM	53,872,472	39,091,363	8,008,379	6,772,730	23.76%	0.84
OI	36,743,630	25,043,945	4,782,665	6,917,020	16.21%	0.52
OTHER	6,540,345	5,317,064	551,071	672,210	2.88%	Not applicable
TOTAL	226,707,460	155,638,497	41,298,924	29,770,039	100.00%	
PERCENTAGE	100.00%	68.65%	18.22%	13.13%		



ON SERVICE ACCESSES, FIXED TELEPHONY

Group	Accesses	Market Share	Complaints Index
VIVO	10,532,988	31.96%	1.82
OI	10,076,373	30.58%	2.01
CLARO	9,691,542	29.41%	1.46
OTHER	2,651,364	8.05%	Not applicable
TOTAL	32,952,267	100.00%	

ACCESSES PER TYPE OF GRANTS, FIXED TELEPHONY

Type	Accesses	Percentage
As a public service concession	17,816,156	54.07%
As a private service	15,136,111	45.93%
TOTAL	32,952,267	100.00%



WIRED BROADBAND, PER GROUP AND TECHNOLOGY

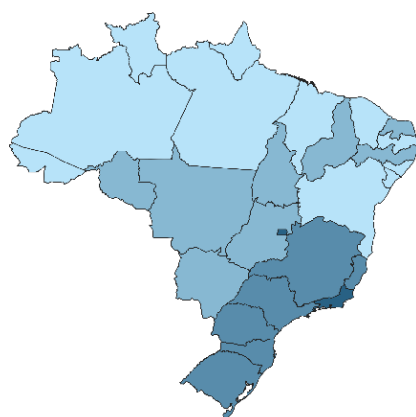
Group	Accesses	Twisted-pair cable	Coaxial cable	Optic Fiber	Radio	Others	Market Share	Complaints Index
CLARO	9,602,113	77,192	9,212,536	287,740	14,852	9,793	29.57%	1.66
OI	5,135,917	4,003,405	0	1,100,975	17,941	13,596	15.82%	2.33
VIVO	6,943,337	4,309,411	0	2,633,926	0	0	21.38%	2.12
OTHER	10,787,105	1,568,478	377,569	6,324,766	2,028,558	487,734	33.22%	Not applicable
TOTAL	32,468,472	9,958,486	9,590,105	10,347,407	2,061,351	511,123	100.00%	
PERCENTAGE	100.00%	30.67%	29.54%	31.87%	6.35%	1.57%	13.13%	



PAY TV, PER GROUP AND TECHNOLOGY

Group	Accesses	DTH	FTTH	MMDS	TVA	TVC	Market Share	Complaints Index
CLARO	7,691,138	1,156,216	0	0	0	6,534,922	49.42%	1.46
SKY/AT&T	4,636,333	4,636,333	0	0	0	0	29.79%	2.09
OI	1,502,473	1,436,022	66,451	0	0	0	9.65%	1.91
VIVO	1,305,433	577,849	727,584	0	0	0	8.39%	1.90
OTHER	426,977	87,259	126,554	0	26	213,099	2.74%	Not applicable
TOTAL	15,562,354	7,893,679	920,589	0	26	6,748,021		
PERCENTAGE	100.00%	50.72%	5.92%	0.00%	0.00%	43.36%		

Base Stations (BS) per Inhabitants



Transport Network - Fiber presence

