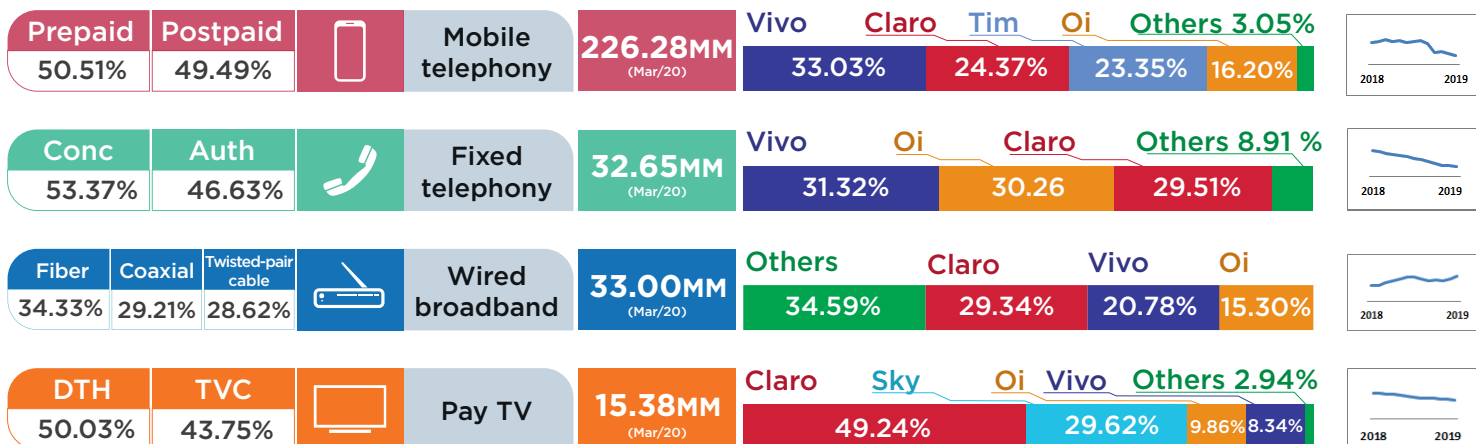


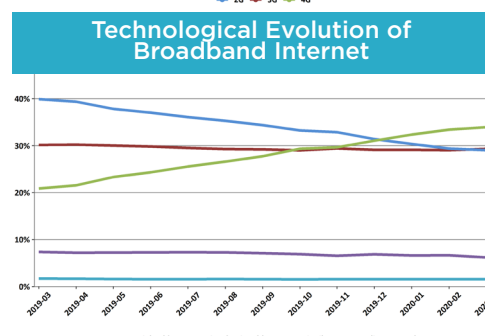
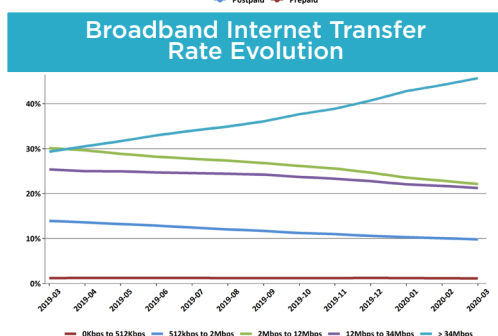
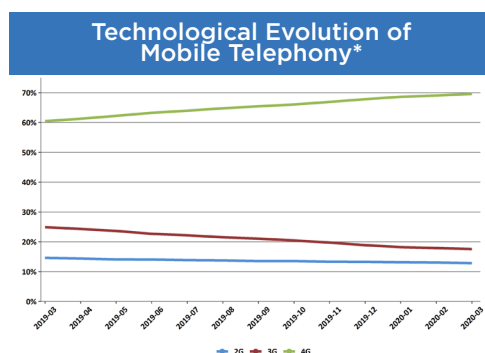
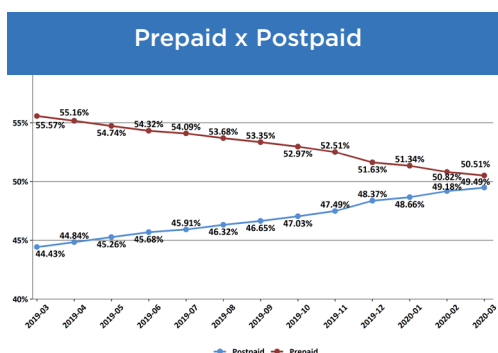
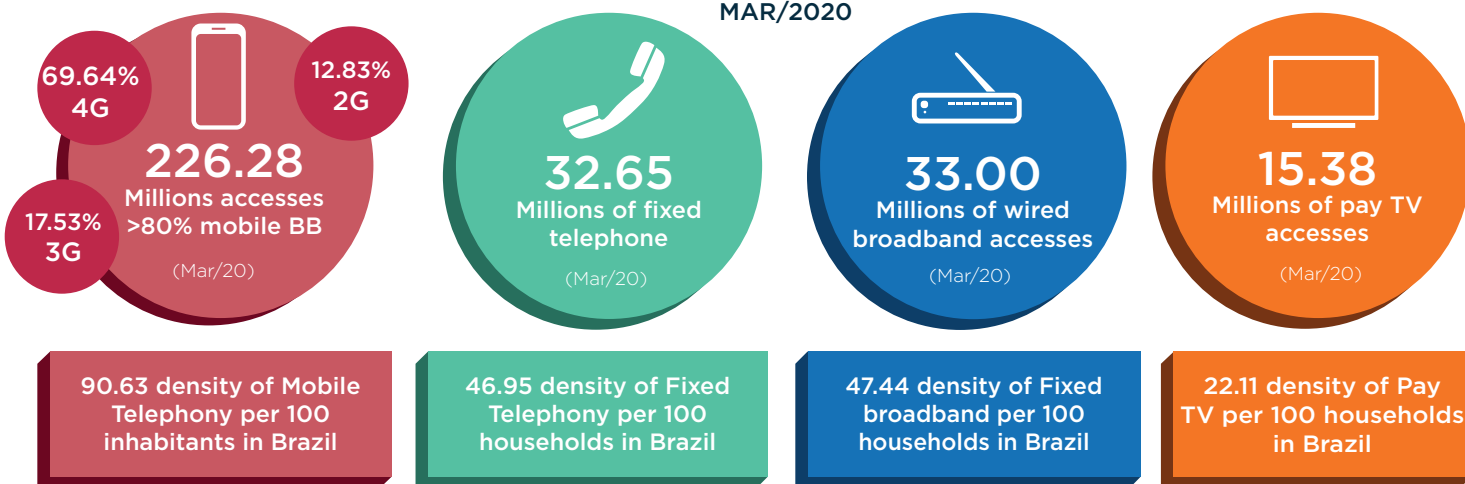


OVERVIEW OF TELECOMMUNICATION IN BRAZIL MARCH/2020



307.31 Millions

contract of telecom services in
MAR/2020



MOBILE TELEPHONY, PER GROUP AND TECHNOLOGY

Group	Accesses	4G	3G	2G	Market Share	Complaints Index
VIVO	74,749,738	50,208,043	10,779,346	13,762,349	33.03%	0.22
CLARO	55,135,181	37,433,745	16,256,198	1,445,238	24.37%	0.28
TIM	52,825,685	39,039,872	7,415,167	6,370,646	23.35%	0.35
OI	36,664,889	25,410,412	4,475,275	6,779,202	16.20%	0.28
OTHER	6,905,258	5,484,449	735,467	685,342	3.05%	Not applicable
TOTAL	226,280,751	157,576,521	39,661,453	29,042,777	100.00%	
PERCENTAGE	100.00%	69.64%	17.53%	12.83%		

ON SERVICE ACCESSES, FIXED TELEPHONY

Group	Accesses	Market Share	Complaints Index
VIVO	10,225,510	31.32%	0.70
OI	9,880,900	30.26%	0.86
CLARO	9,637,038	29.51%	0.36
OTHER	2,909,089	8.91%	Not applicable
TOTAL	32,652,537	100.00%	

ACCESSES PER TYPE OF GRANTS, FIXED TELEPHONY

Type	Accesses	Percentage
As a public service concession	17,585,889	53.37%
As a private service	15,216,333	46.63%
TOTAL	32,652,537	100.00%

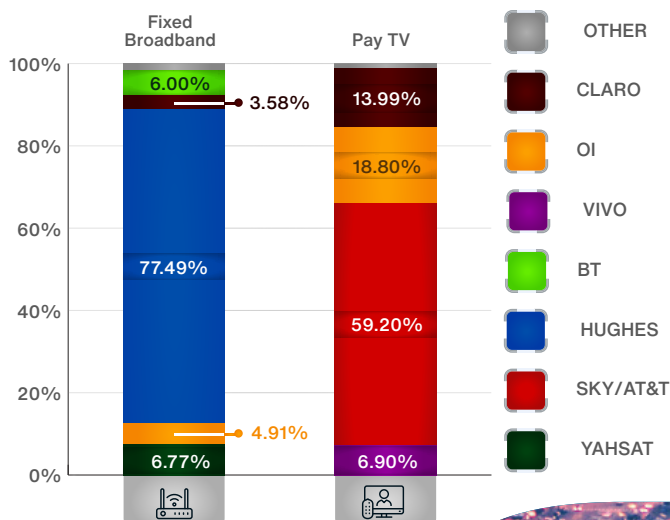
WIRED BROADBAND, PER GROUP AND TECHNOLOGY

Group	Accesses	Twisted-pair cable	Coaxial cable	Optic Fiber	Radio	LTE	Satellite	Market Share	Complaints Index
CLARO	9,680,615	77,144	9,257,893	320,928	14,765	0	9,885	29.34%	0.80
VIVO	6,857,135	4,089,621	0	2,767,514	0	0	0	20.78%	1.10
OI	5,048,377	3,752,168	0	1,266,345	16,312	0	13,552	15.30%	1.25
OTHER	11,412,729	1,524,974	381,425	6,974,915	2,047,860	229,835	253,720	34.59%	Not applicable
TOTAL	32,998,856	9,443,907	9,639,318	11,329,702	2,078,937	229,835	277,157	100.00%	
PERCENTAGE	100.00%	28.62%	29.21%	34.33%	6.30%	0.70%	0.84%		

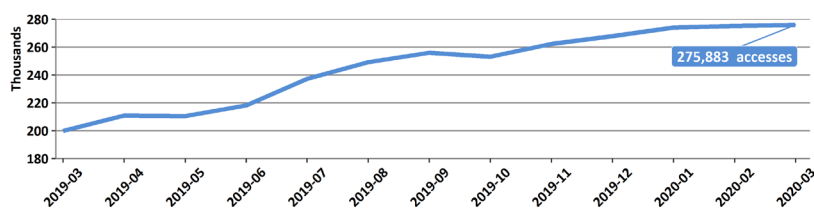
PAY TV, PER GROUP AND TECHNOLOGY

Group	Accesses	DTH	FTTH	MMDS	TVA	TVC	Market Share	Complaints Index
CLARO	7,572,334	1,076,092	0	0	0	6,496,242	49.24%	0.86
SKY/AT&T	4,554,564	4,554,564	0	0	0	0	29.62%	1.30
OI	1,516,606	1,446,372	70,234	0	0	0	9.86%	1.42
VIVO	1,282,891	530,969	751,922	0	0	0	8.34%	1.49
OTHER	451,989	85,218	133,936	251	64	232,520	2.94%	Not applicable
TOTAL	15,378,384	7,693,215	956,092	251	64	6,728,762	100.00%	
PERCENTAGE	100.00%	50.03%	6.22%	0.00%	0.00%	43.75%		

MARKET SHARE - SATELLITE



Number of satellite service accesses, Broadband Internet



Number of satellite service accesses, Pay TV

